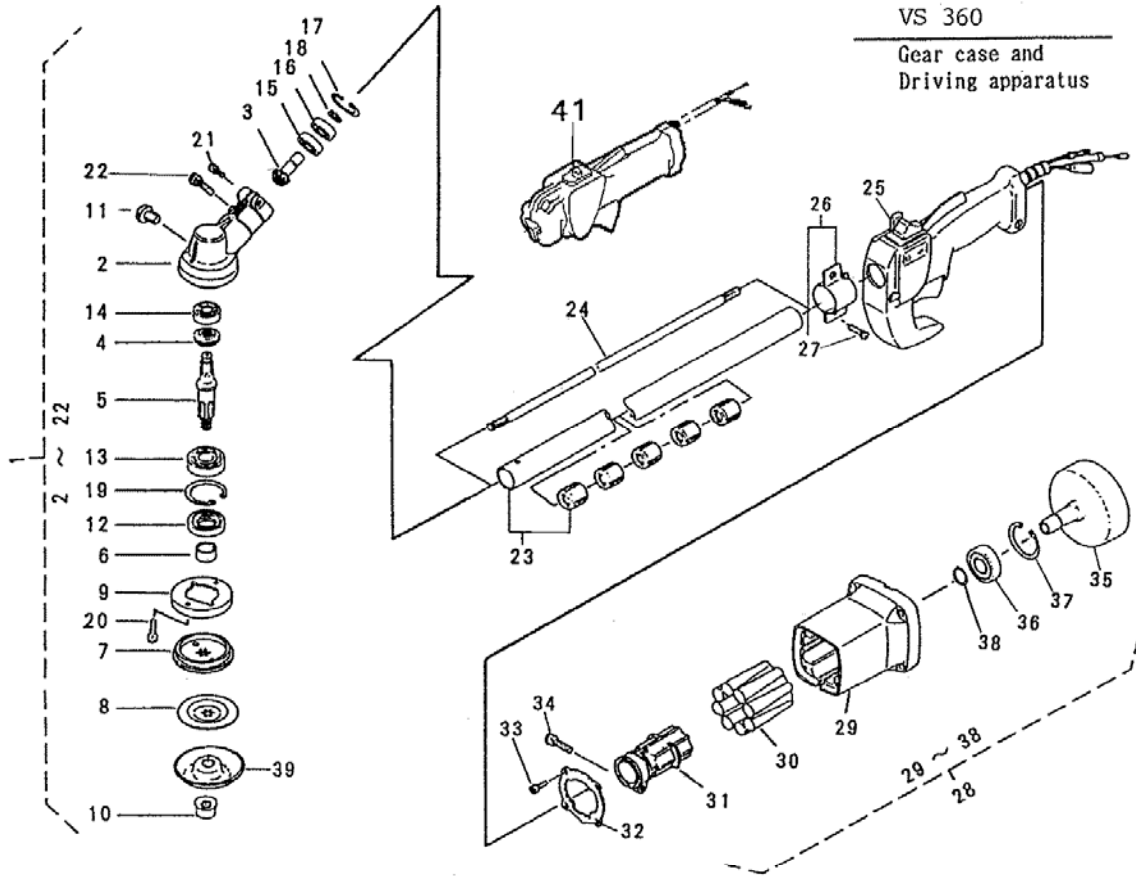


VS360
Gear case and
Driving apparatus

46013-417

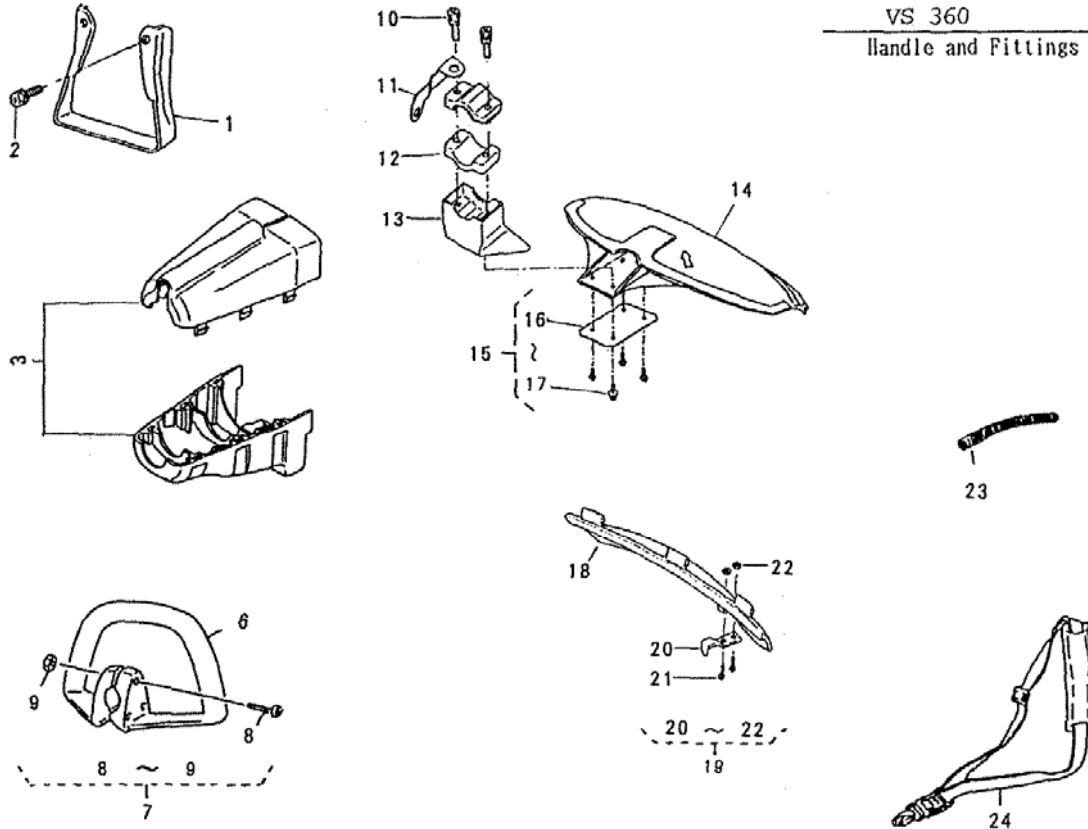
REF. NO.	PARTS NO.	PARTS NAME	Q'TY	Apr. 5. 1996		REMARKS
				PRICE (¥)	RECOMM. (%)	
1	71008 273	GEAR CASE ASS'Y	1			
2	51001 241	GEAR CASE	1			
3	78002 102	BEVEL PINION	1			
4	78001 102	BEVEL GEAR	1			
5	64001 145	SPLINE SHAFT	1			
6	61001 121	SPLINE SLEEVE	1			
7	11001 152	HOLDER(A)	1			
8	11002 129	HOLDER(B)	1			
9	11004 131	GRASS COVER	1			
10	31001 106	SAW LOCK NUT	1			
11	377L 0810	(+)BINDING SCREW	1			M8x10
12	61002 107	OIL SEAL	1			TC 20x35x7
13	919B 6202	BEARING	1			6202C3
14	913B 0629	BEARING	1			629
15	913B 6000	BEARING	1			6000
16	912B 6000	BEARING	1			60000ZZ
17	811V 3500	C-SNAP RING FOR HOLE	1			φ 35
18	811V 2600	C-SNAP RING FOR HOLE	1			φ 26
19	812V 1000	C-SNAP RING FOR SHAFT	1			φ 10
20	413U 0510	SOCKET SCREW(W/SW)	1			M5x10
21	413U 0515	SOCKET SCREW(W/SW)	1			M5x15
22	412U 0620	SOCKET SCREW	2			M6x20
23	71130 125	MAIN PIPE C.P.	1			
24	64011 124	MAIN SHAFT	1			
25	71056 162	THROTTLE LEVER ASS'Y	1			



VS 360
Gear case and
Driving apparatus

46013-417

REF. NO.	PARTS NO.	PARTS NAME	Q' TY	Apr. 5. 1996		REMARKS
				PRICE (¥)	RECOMM. (%)	
26	71012 130	HANGER BAND ASS'Y	1			
27	413U 0512	SOCKET SCREW (W/SW)	1	M5x12		
28	71010 190	CLUTCH CASE ASS'Y	1			
29	51030 168	CLUTCH CASE	1			
30	36005 144	VIBRO-ISOLATING RUBBER	1			
31	36041 107	PIPE SUPPORT	1			
32	11120 261	PLATE	1			
33	412U 0515	SOCKET SCREW	4	M5x15		
34	416U 0625	SOCKET SCREW	1	M6x25		
35	11014 174	CLUTCH DRUM C. P.	1			
36	912B 6203	BEARING	1	6203ZZ		
37	811V 4000	C-SNAP RING FOR HOLE	1	φ 40		
38	812V 1700	C-SNAP RING FOR SHAFT	1	φ 17		
39	11027 117	STABILIZER	1			
40						
41		NEW THROTTLE LEVER	1			
42						
43						
44						
45						
46						
47						
48						
49						
50						



46018-417

REF. NO.	PARTS NO.	PARTS NAME	Q'TY	Apr. 5. 1996		REMARKS
				PRICE(¥)	RECOMM. (%)	
1	11024 130 09	STAND	1			
2	315N 0630	(+)HEXAGON BOLT(W/SW, PW) M6x30	4			
3	71900 485	CLUTCH CASE COVER SET	1			
6	51023 142	SINGLE HANDLE	1			
7	71052 125	BOLT SET	1			
8	374L 0535	(+)SCREW (W/SW, PW) M5x35	3			
9	512L 0500	HEXAGON NUT M5	3			
10	315L 0635	(+)HEXAGON BOLT (W/SW, PW) M6x36	2			
11	11113 323	STAY	1			
12	51018 108	PIPE METAL FITTING(A)	2			
13	11113 271 09	STAY	1			
14	36046 132	SAFETY GUARD	1			
15	71137 161	BOLT AND NUT SET	1			
16	11050 140	FIXING PLATE	1			
17	413U 0515	SOCKET SCREW FLANGE M5x15	4			
18	36065 250	COVER	1			
19	71125 109	BLADE SET	1			
20	91014 174	BLADE	1			
21	318L 0515	(+)HEXAGON BOLT (W/SW)	2			
22	511L 0500	HEXAGON NUT	2			
23	41003 128	TUBE	1			
24	36063 174	SHOULDER BAND	1			